



# Installation & Setup Instructions



## Downloading ArkWorks from the Internet

1. Open **Internet Explorer**
2. In the address bar, **Enter:** <http://www.ark-works.com>
3. Click on **I already have ArkWorks – Support - Downloads**
4. Click on the link to install **ArkWorks Installation Package**
5. Click **Save** on the File Download screen and save the file to your **Desktop** of the **Server** or **Standalone** machine.
6. After you have downloaded the installation software, double-click on the **arkworkssetup.exe** icon on the desktop

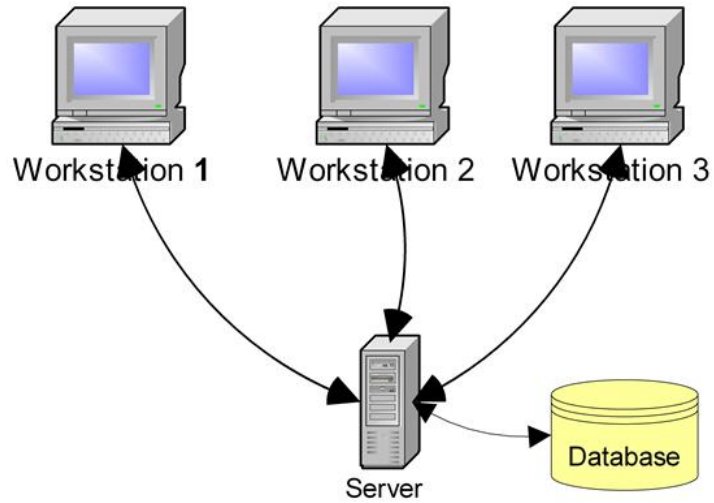


arkworkssetup

**If you are doing a network setup install on the server first then the workstations.**

## **NETWORK INSTALL**

# SERVER INSTALL



## Step 1



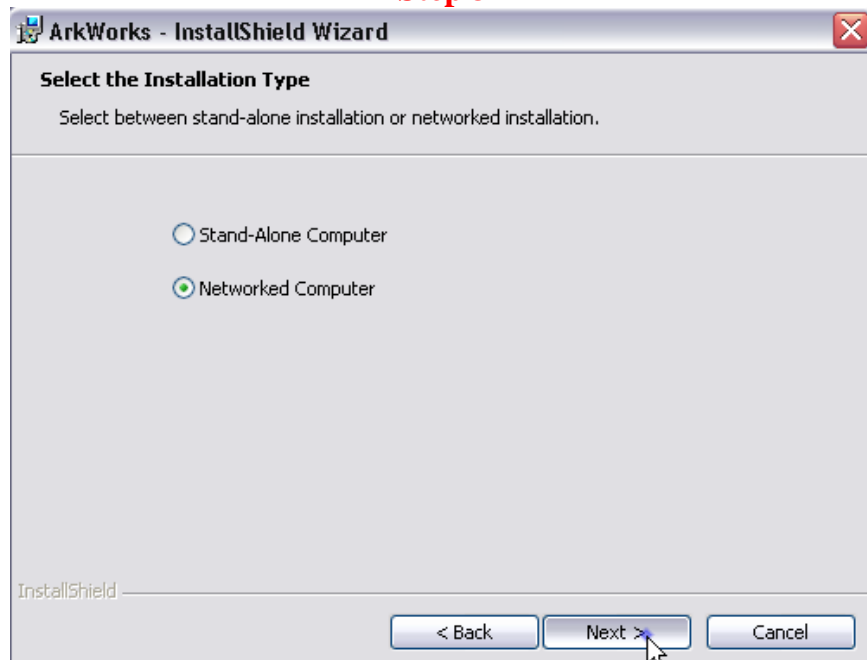
**Select Next to start Install.**

## Step 2



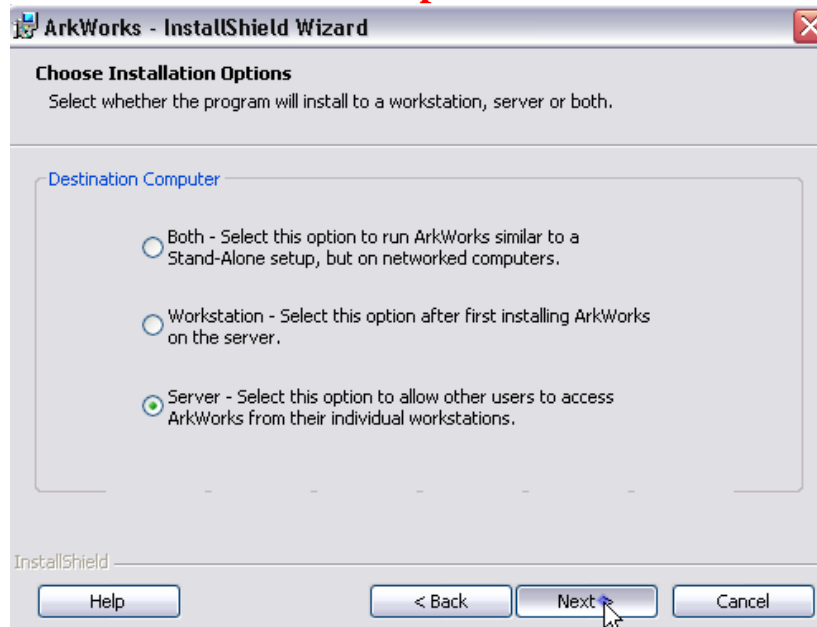
**Mark the “*I accept the terms in the license agreement*” box...Click Next.**

## Step 3



**Select Networked Computer as the Installation Type...Click Next.**

## Step 4



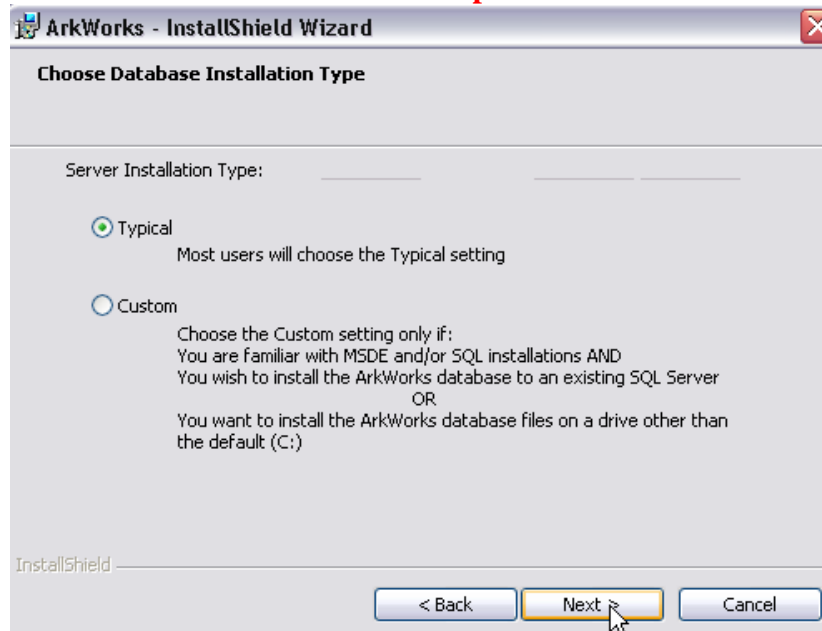
**1: If the Server is also going to be a Workstation select the Both Option then click next.**

- *This will install the functional program as well as the database.*

**2: If it is going to be just a Server select the Server Option then click next.**

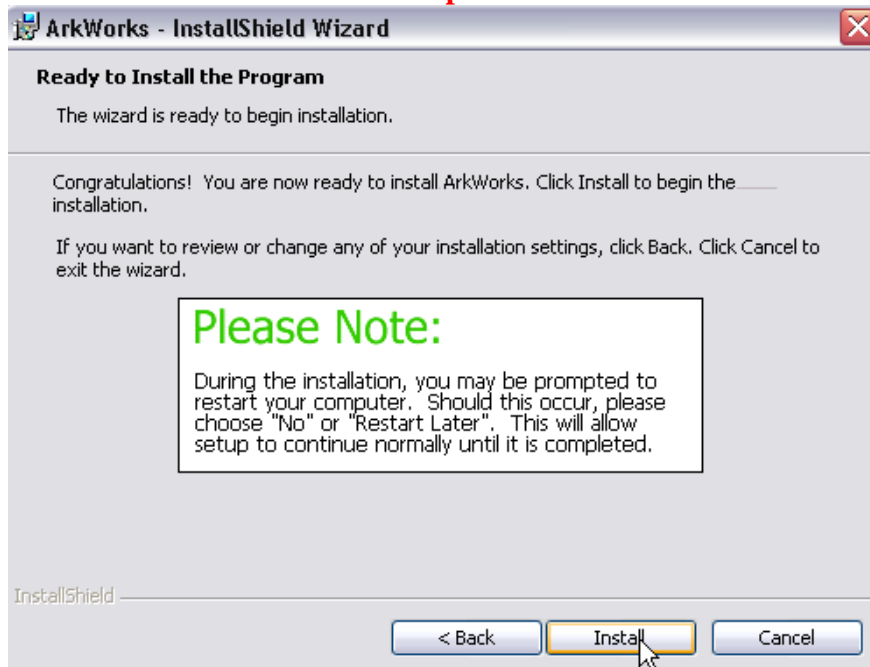
- *This will install just the database and not the functional program.*

## Step 5



**Select the Typical Option as the Installation Type...Click Next.**

## Step 6



**You are ready to install...Click on the Install Button.**

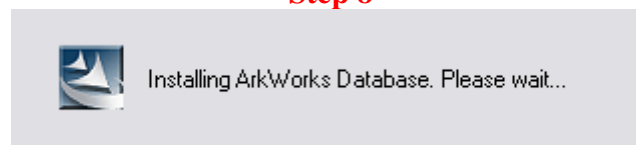
## Step 7



**The first thing that will install is the SQL Database Engine.**  
*(This may take several minutes)*

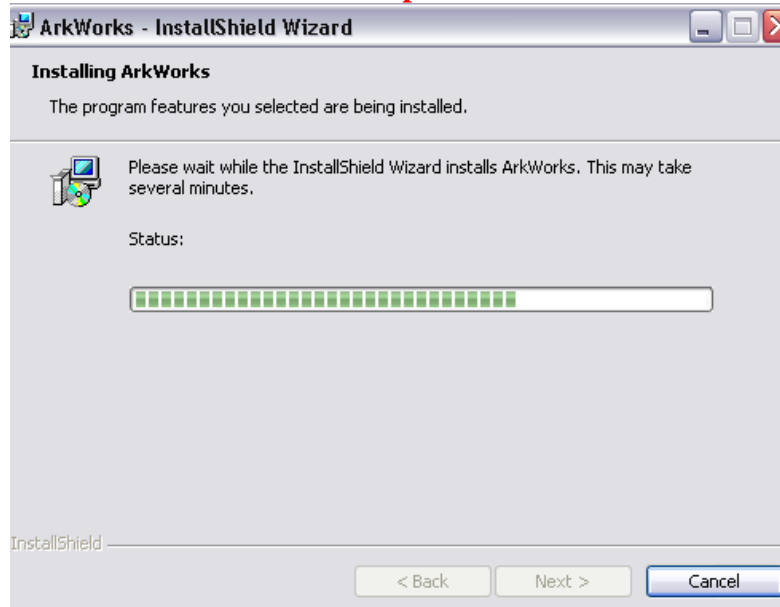
**Note: Firewall Software could block the install of this component.**

## Step 8



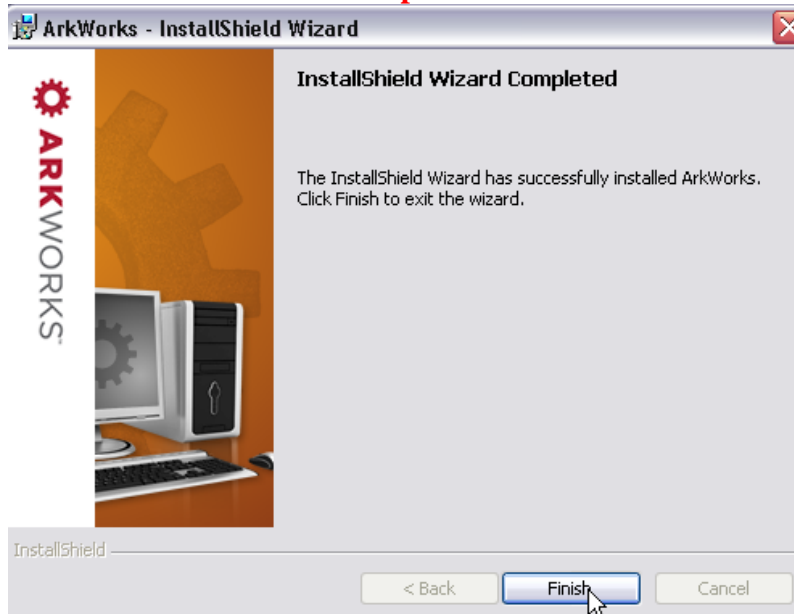
**The next thing it will install is the ArkWorks Database.**

## Step 9



Now it will install the rest of the system components.

## Step 10



Once completed click on the Finish button



arkworkssetup

Move this file from the desktop of the server to a network location that the Workstations can access, then you can use this same file to install with.

# WORKSTATION INSTALL:

## Step 1



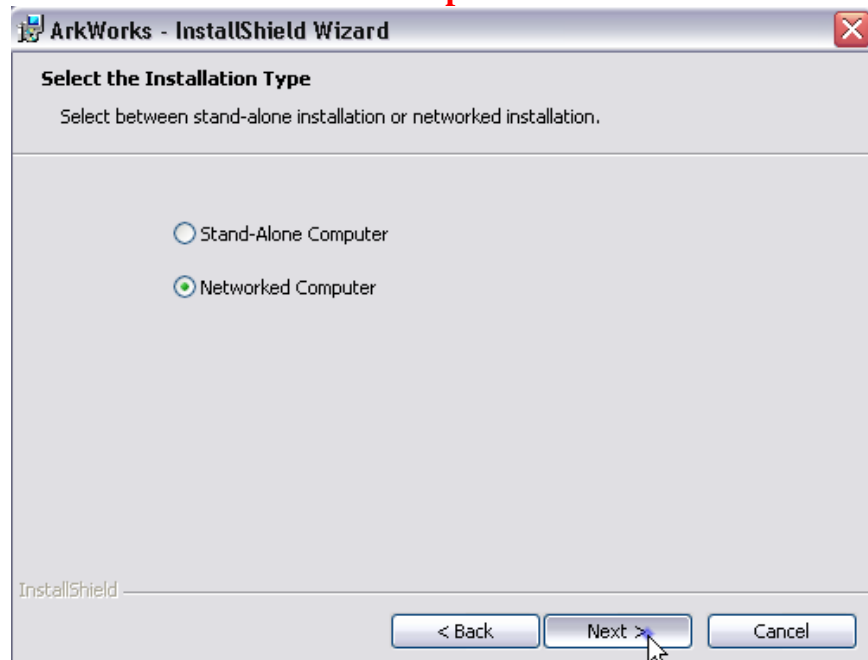
Select Next to start Install.

## Step 2



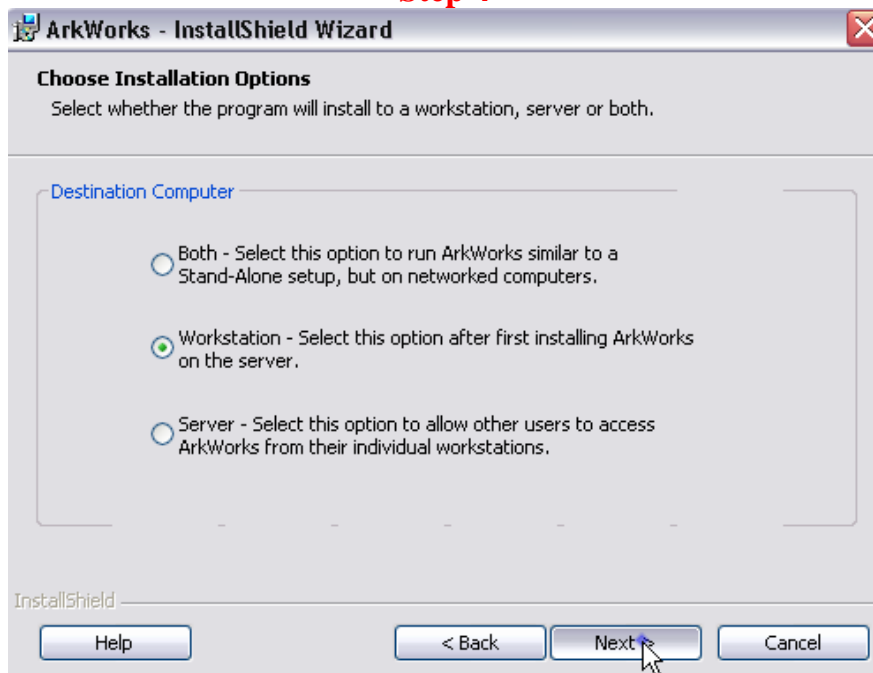
Mark the “I accept the terms in the license agreement” box...Click Next.

### Step 3



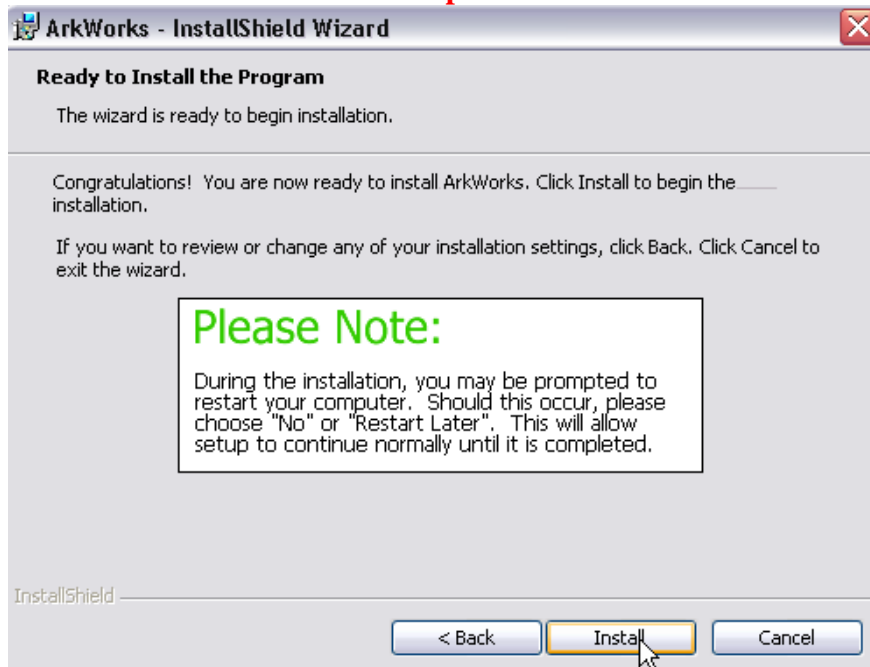
**Select Networked Computer as the Installation Type...Click Next.**

### Step 4



**Select the Workstation Install as the Installation Option...Click Next.**

## Step 5



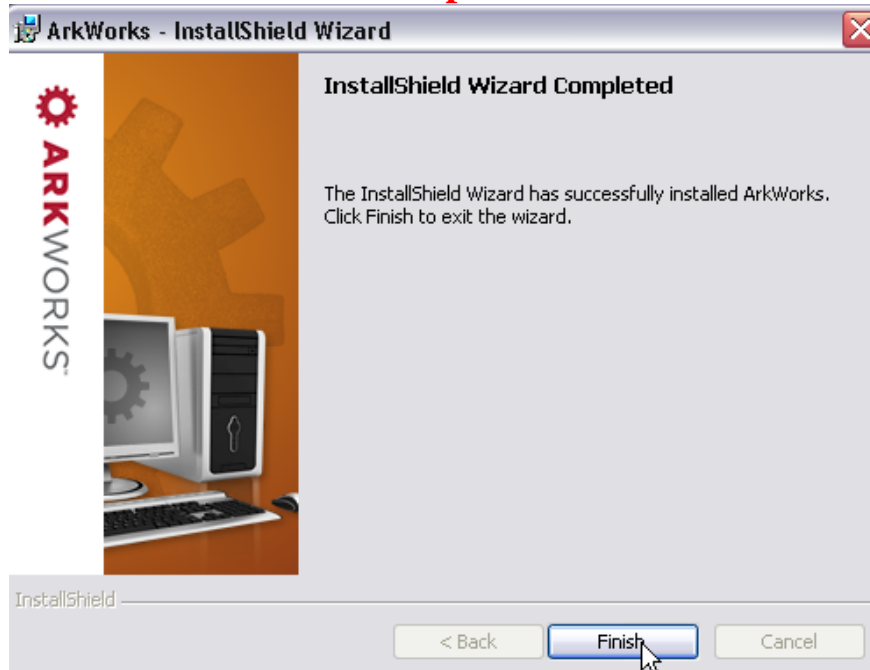
**You are ready to install...Click on the Install Button.**

## Step 6



**Now it will install the rest of the system components.**

## Step 7



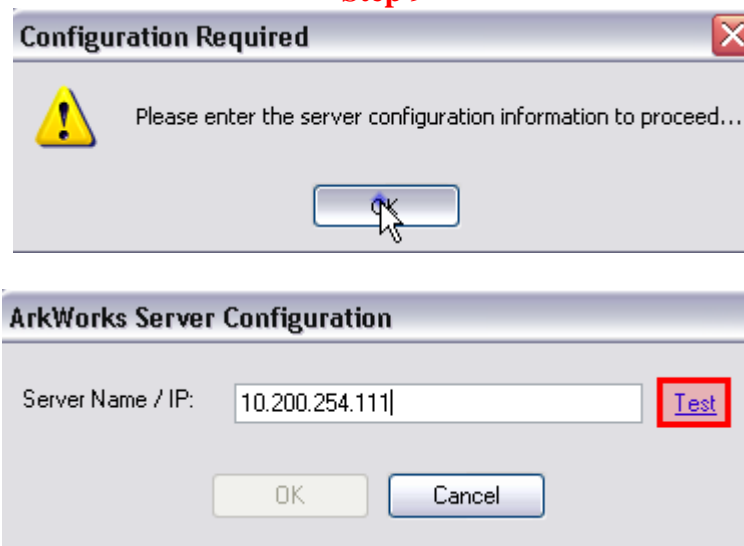
Once completed click on the Finish button

## Step 8

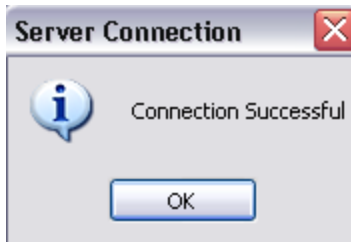


You now have the ArkWorks icon on the desktop "Double" click on it.

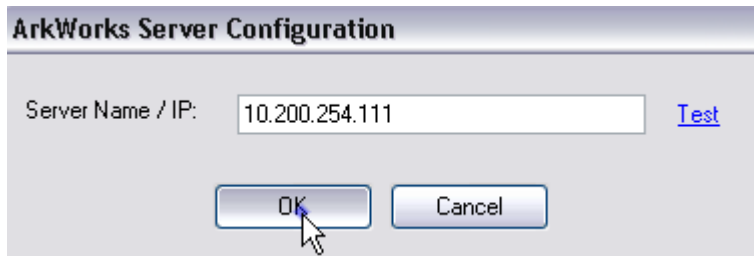
## Step 9



Type in the Server name or Server's IP address...Click Test.

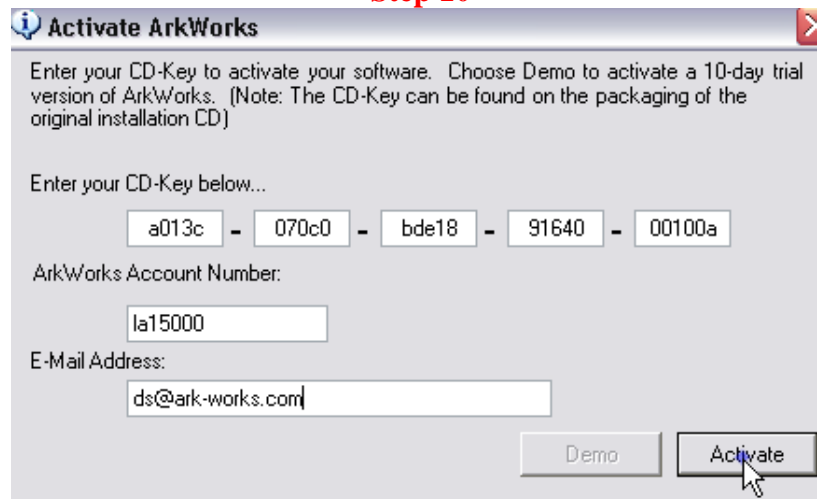


After clicking test you should receive this message...click ok.



Click on "OK"

### Step 10



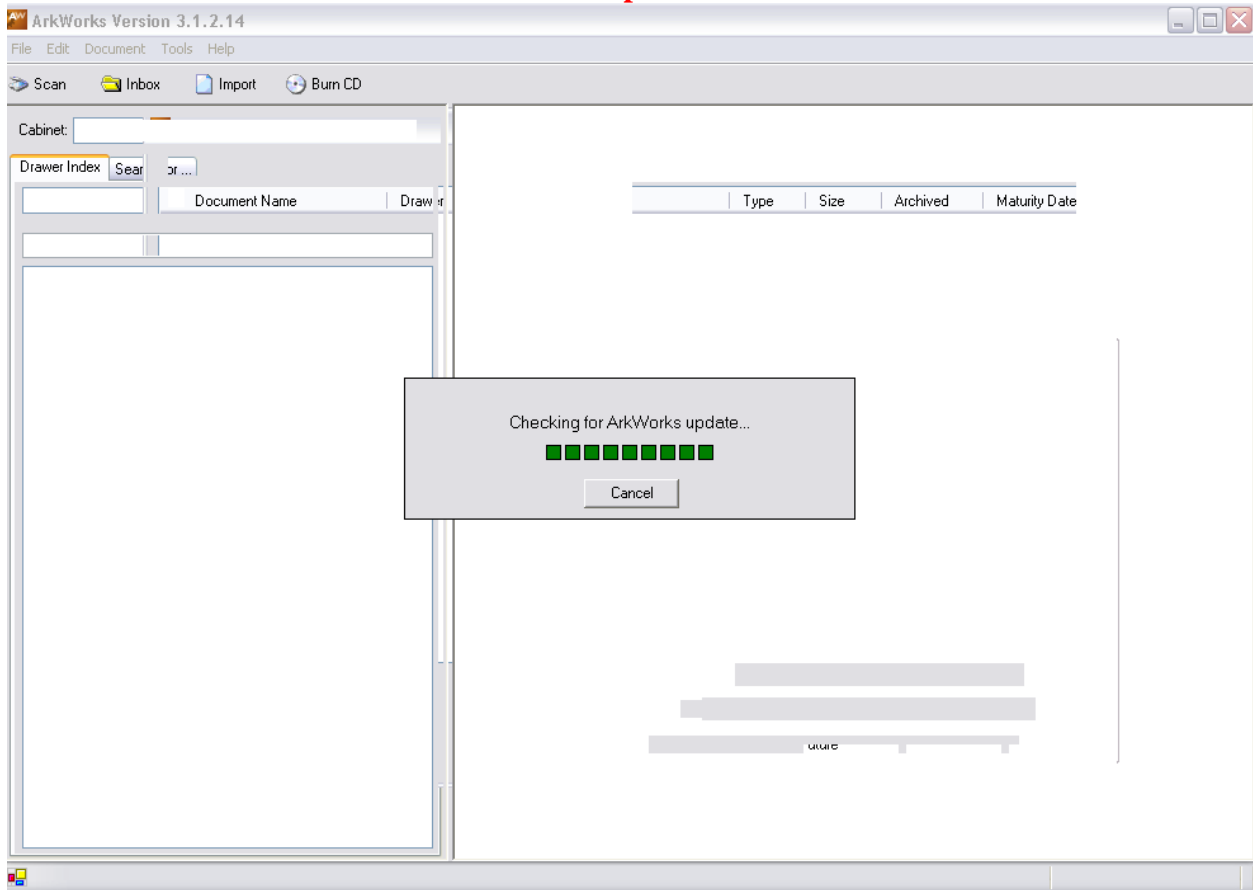
From here enter your Activation Key Code, Account Number and Email Address...Click Activate.

*(This Information came in an email from our accounting department)*



Click "OK"

## Step 11



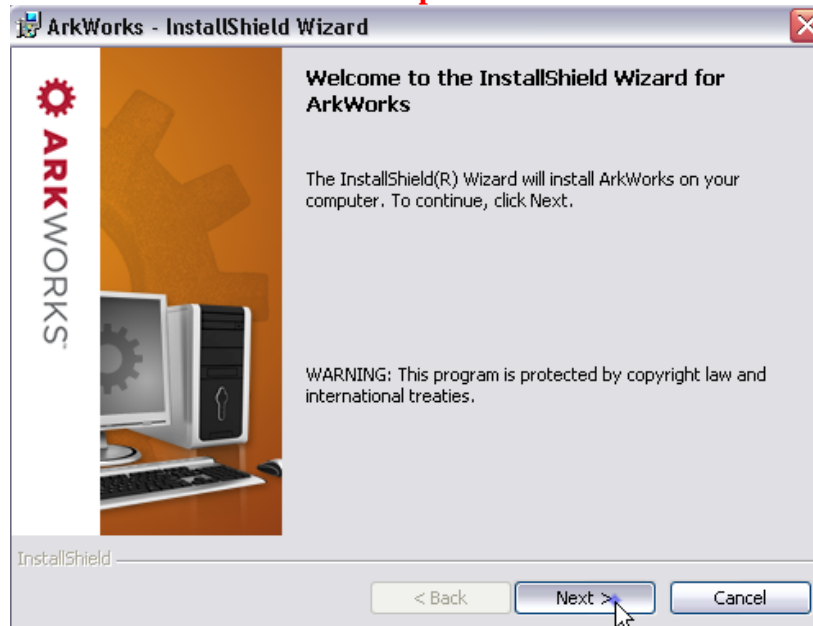
**The program will open and it will say there are updates, click ‘YES’ to download.**

**At this point you can proceed to install ArkWorks on the remaining Workstations.**

## STANDALONE INSTALL

*This install type will install the database and the ArkWorks interface on a single machine.*

## Step 1



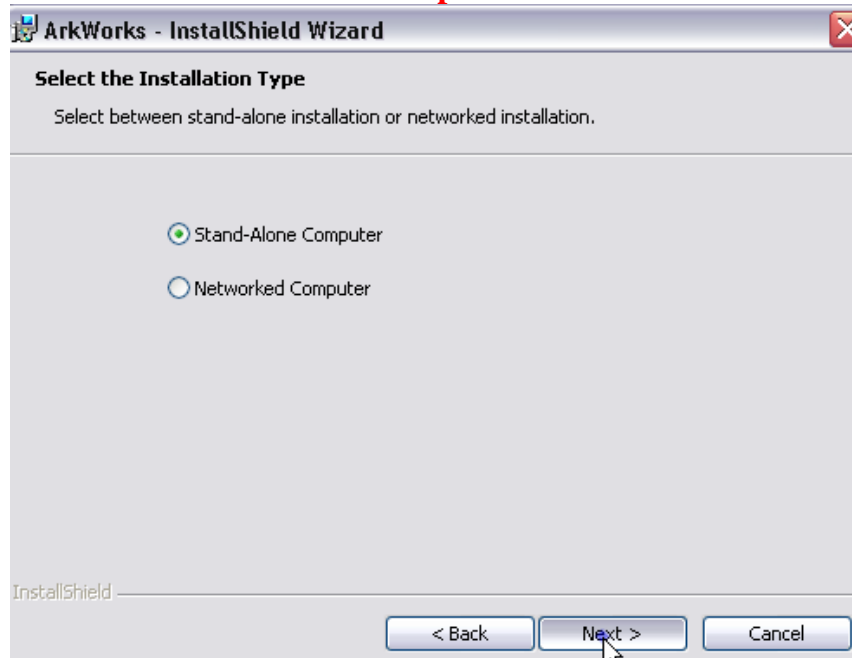
**Select Next to start Install.**

## Step 2



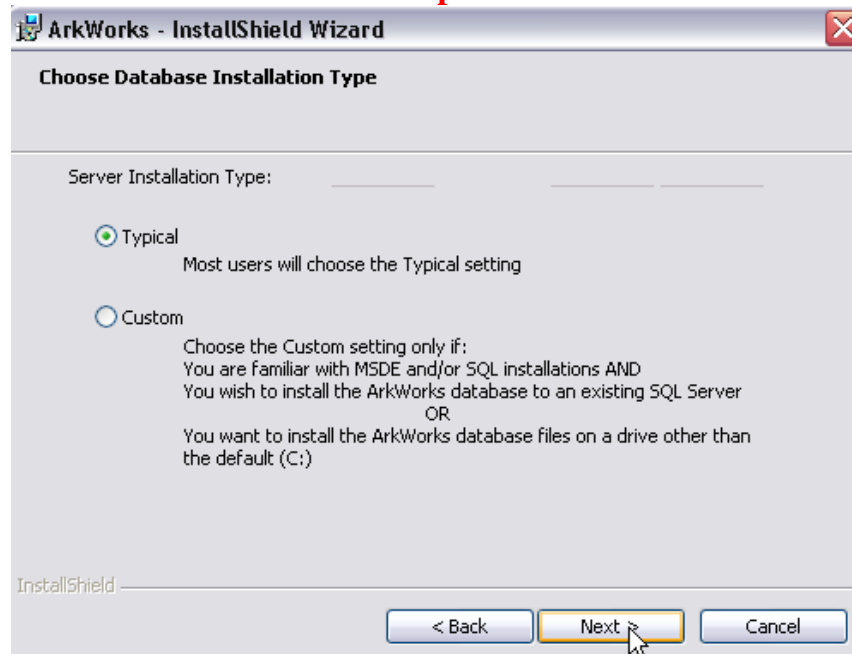
**Mark the “*I accept the terms in the license agreement*” box...Click Next.**

### Step 3



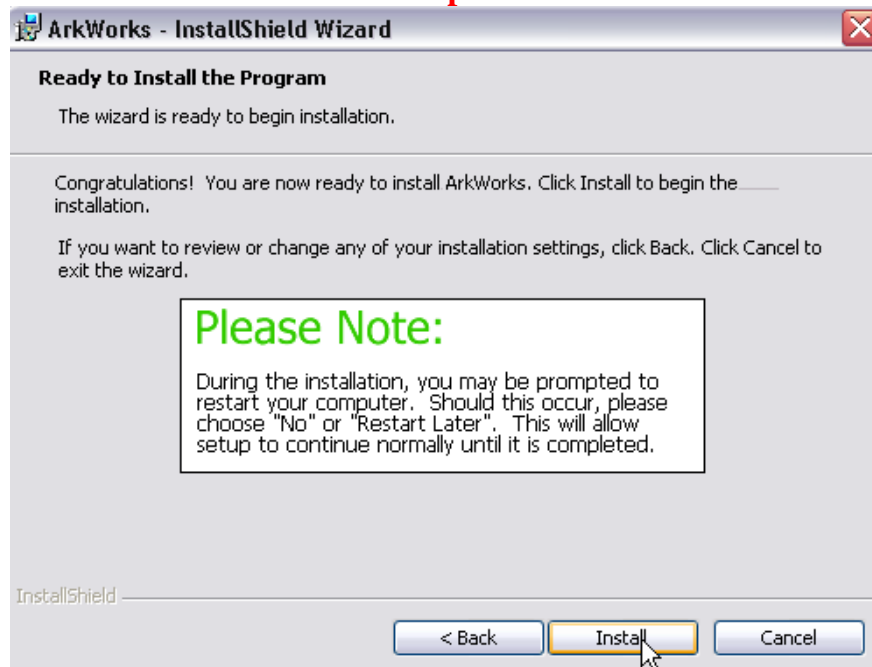
**Select Stand-Alone Computer...Click Next.**

### Step 3



**Select Typical as the Installation Type...Click Next.**

## Step 4



**You are ready to install...Click on the Install Button.**

## Step 5

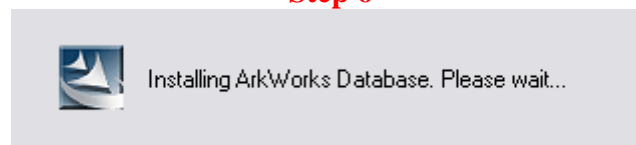


**The first thing that will install is the SQL Database Engine.**

*(This may take several minutes)*

**Note: Firewall Software could block the install of this component.**

## Step 6



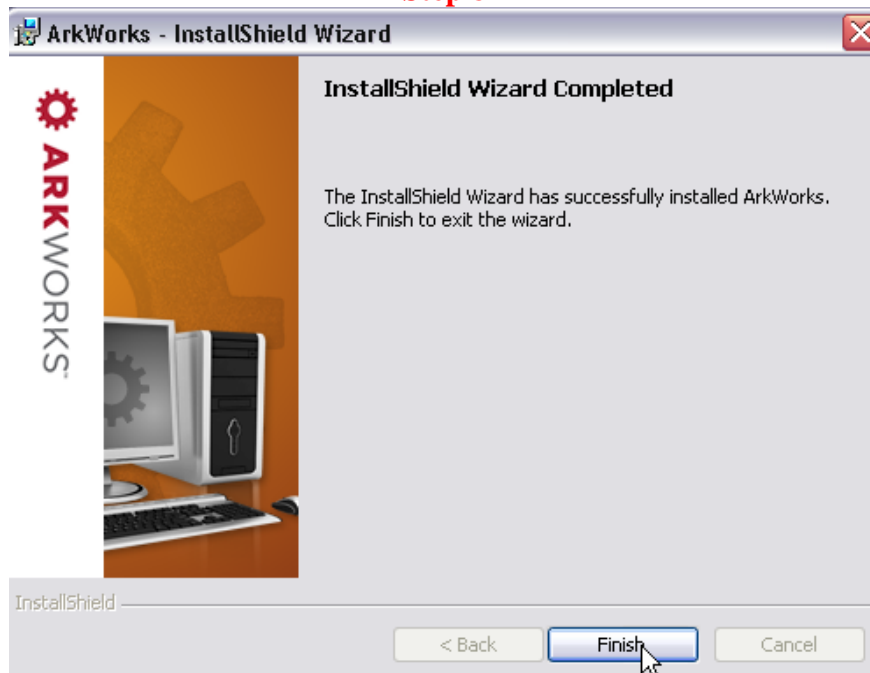
**The next thing it will install is the ArkWorks Database.**

## Step 7



Now it will install the rest of the system components.

## Step 8



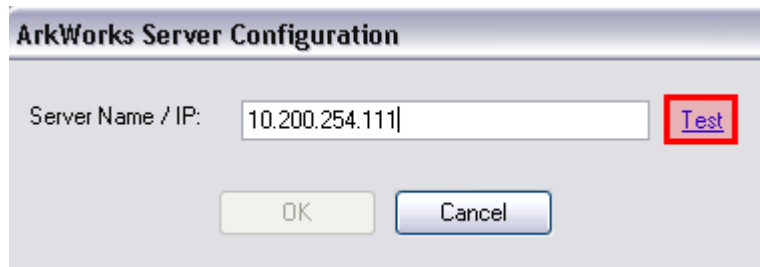
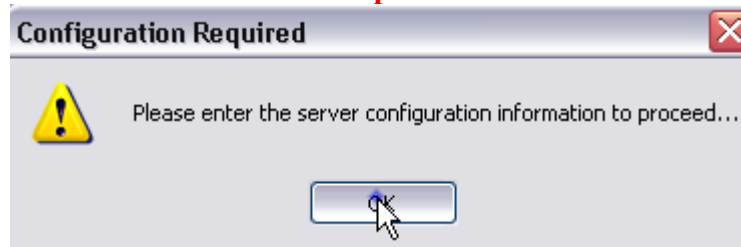
Once completed click on the Finish button

**Step 9**

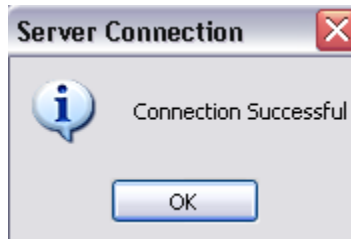


You now have the ArkWorks icon on the desktop “Double” click on it.

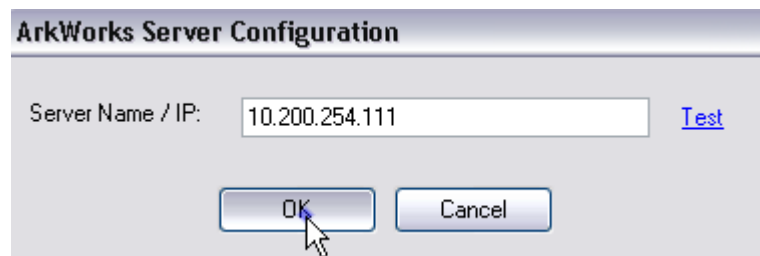
**Step 10**



Type in the Server name or Server’s IP address...Click Test.

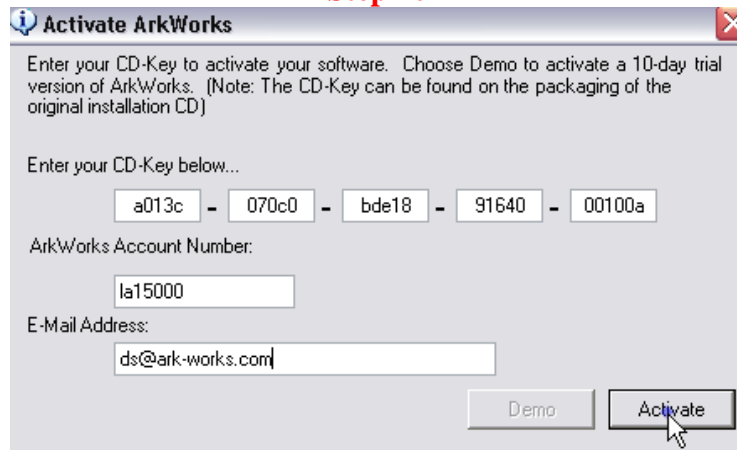


After clicking test you should receive this message...click ok.



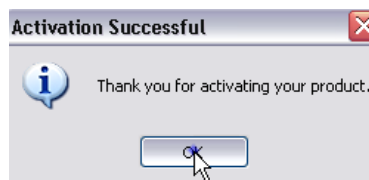
Click on “OK”

## Step 10



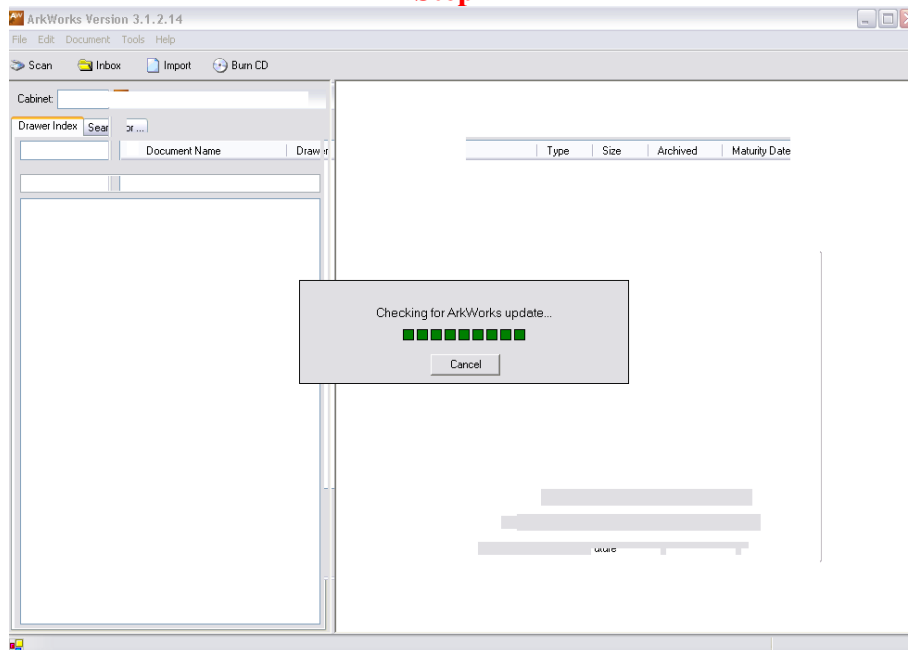
**From here enter your Activation Key Code, Account Number and Email Address...Click Activate.**

*(This Information came in an email from our accounting department)*



**Click "OK"**

## Step 11



**The program will open and it will say there are updates, click 'YES' to download.**